

# HPSS

High Powered Speaker Station | Directional Horns for Maximum Intelligibility

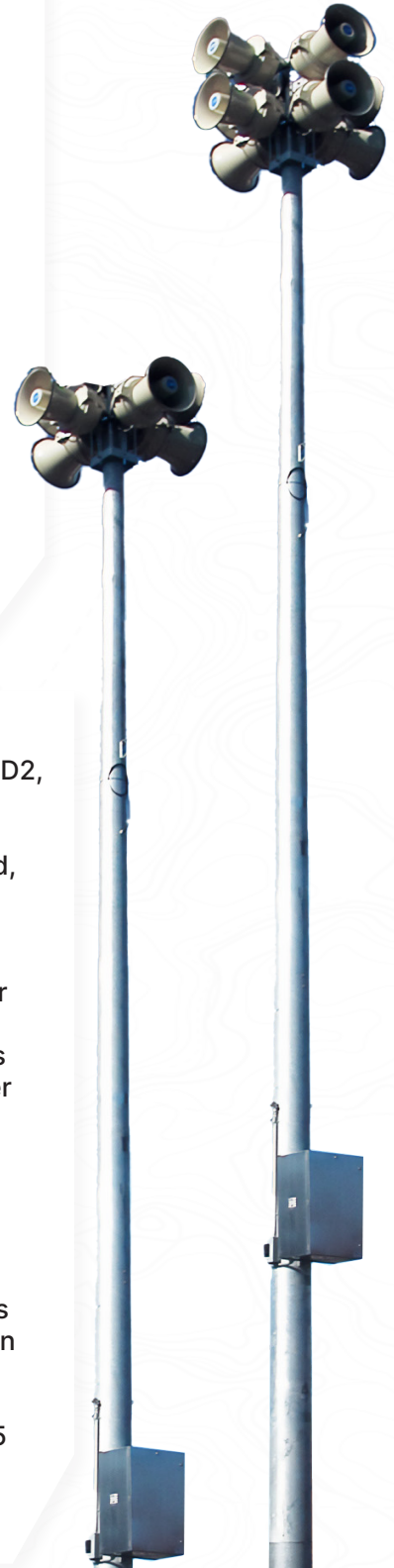
The High Powered Speaker Station (HPSS) provides exceptional voice clarity for outdoor mass notification applications where intelligibility of pre-recorded voice messages and live Public Address (PA) is critical. The HPSS provides up to 3200 watts of continuous audio output. It is also capable of driving strobe lights and LED message signs for visual alerting in areas with high ambient noise levels. The HPSS comes with two configurations, one with 1600 watts of acoustic power, and one with 3200 watts of acoustic power. The HPSS is monitored, controlled, and activated by an ATI central control unit, REACT5000, or can operate as a standalone using the Local Operating Console (LOC) option.\*

The HPSS can support multiple simultaneous communication paths. In the event of AC power loss, the batteries provide a full week of standby time followed by at least 30 minutes of continuous activation. In addition, ATI offers flexible on and off the grid power options. These units are recommended for use when intelligibility is the highest priority.

## KEY FEATURES

- Excellent acoustic performance and voice intelligibility
- Cutting edge computing power and enhanced security
- 32 -bit ARM CPU
- SSL/TLS security standards: including AES, RSA, 3DES, ARC4, SHA1, SHA2, MD2, MD4 and MD5
- TTS (Text-to-Speech) capabilities
- Up to eight 400W speaker horns and steel speaker mounting bracket included, for roof or pole-mount installation
- Configurable audio coverage patterns ranging from 360° omnidirectional to unidirectional
- NEMA 4X Stainless steel enclosure with ventilated battery compartment, door intrusion switch, and enclosure mounting bracket
- Unique, compact and highly efficient Class D amplifiers with 1600/3200 watts of continuous audio output power integrated on a high-performance controller board
- Conformal-coated printed circuit boards for operating in harsh environments
- UL464 listed option available upon request\*
- Message encryption and security coding to prevent unauthorized system activations
- Local/remote testing and reporting including "silent" testing
- Temperature-compensated battery charger and power On/Off circuit breakers
- Very low standby power requirements and 60 minutes of continuous activation
- Reliable, flexible, and redundant communication methods: UHF/ VHF RF, IP, Ethernet-over-Fiber, Telephone/ Twisted - DSL, Cellular, and Satellite
- Built-in tone generator providing 10 standard, pre-configured tones; up to 255 pre-recorded voice messages and 100 hours of recording time
- Automatic gain control for consistent output volume

\* Additional hardware/firmware may be required.



PHYSICAL ATTRIBUTES	HPSS 1600 Watt	HPSS 3200 Watt	400W Speaker
Length:	40”	40”	19”
Width:	23”	25”	21”
Depth:	15”	15”	24.34”
Weight (without radio/batteries):	118 lbs	126 lbs	45 lbs
ENVIRONMENTAL CHARACTERISTICS			
Temperature:	-40°C to +60°C		
Humidity:	0 to 95% non-condensing		
ELECTRICAL CHARACTERISTICS	HPSS 1600 Watt	HPSS 3200 Watt	
Supply Voltage:	120VAC 60Hz, 240VAC 50Hz	120VAC 60Hz, 240VAC 50Hz	
Supply Current Max:	5A	3A	
Standby Current (24 VDC):	550mA typical §	550mA typical §	
Standby Time (without AC):	> 7 days §	> 7 days §	
Activation Time Max:	60 minutes (steady tone, full power) §	60 minutes (steady tone, full power) §	
Battery Backup:	2 to 12V 100AH*	2 to 12V 100AH*	
Radio Power Supply:	12V DC, 12A max*	12V DC, 12A max*	
COMMUNICATION I/O			
Communication (to ATI units):	UHF/ VHF RF, IP, Ethernet-over-Fiber, Telephone/ Twisted - DSL, Cellular, and Satellite		
RS485/RS232 Port:	1 maximum (either RS485 or RS232)*		
Signaling Inputs:	8 maximum (configurable)*		
Signaling Outputs:	8 maximum (configurable)*		
Audio Out (for PA or FACP):	Configurable 300/600 ohm balanced or unbalanced*		
PRE-RECORDED MESSAGES/TONE CHARACTERISTICS			
Alert Tones:	10 pre-configured alert tones		
Recorded Messages:	255 max		
Recording Time Max:	100 hours (depends on recording content)		
AMPLIFIER CHARACTERISTICS	HPSS1600	HPSS3200	
400W Speakers:	Up to 4	UP to 8	
Output Voltage:	25V	25V	
Power max (audio/strobe):	1600W RMS	3200W RMS	
Audio Bandwith:	250Hz to 5kHz	250Hz to 5kHz	
Output Regulation:	< 1dB no load to full load	< 1dB no load to full load	
Amplifier Efficiency	90%	90%	

\* Additional hardware/firmware may be required.

§ Depending on battery and radio configuration.